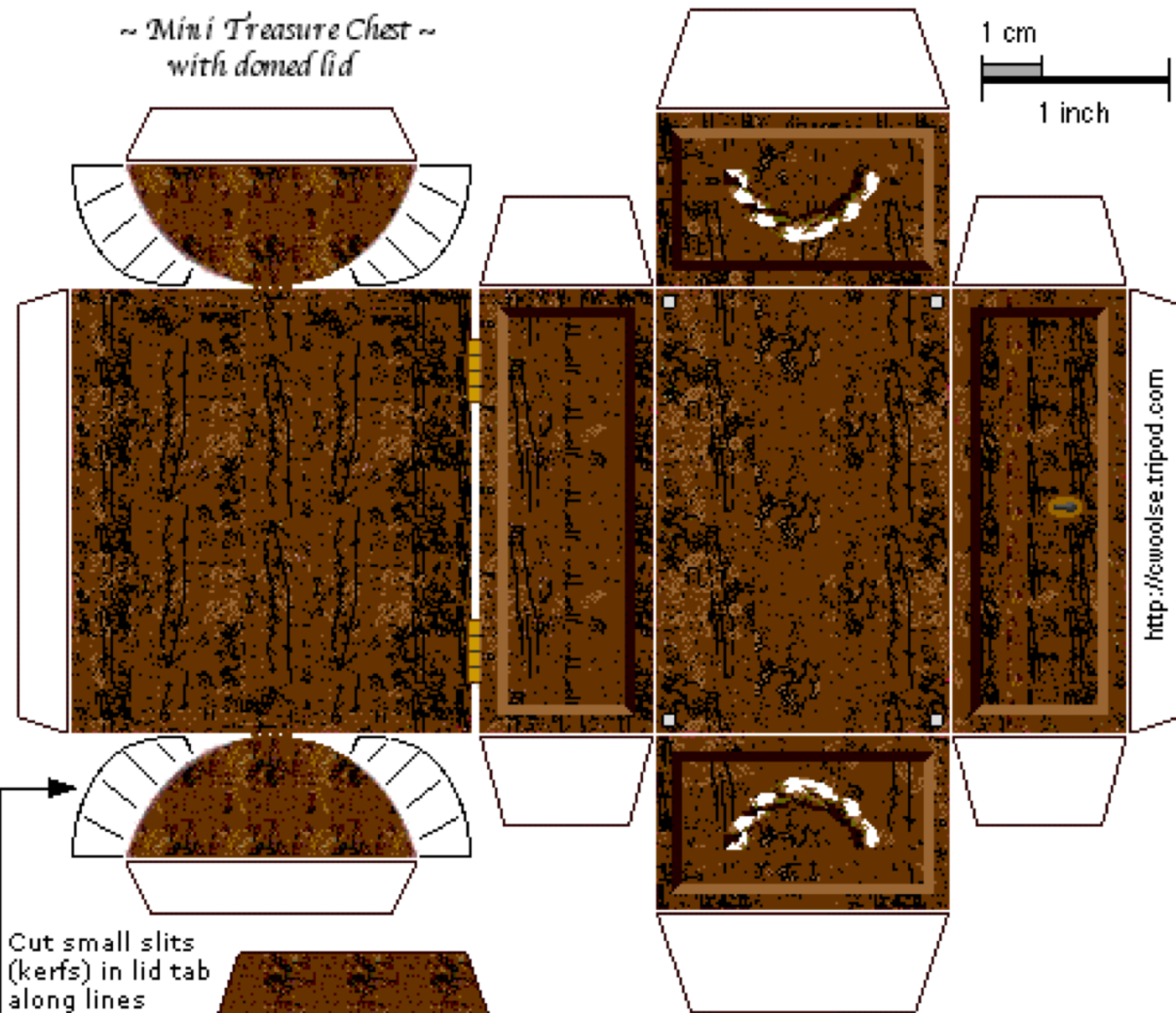
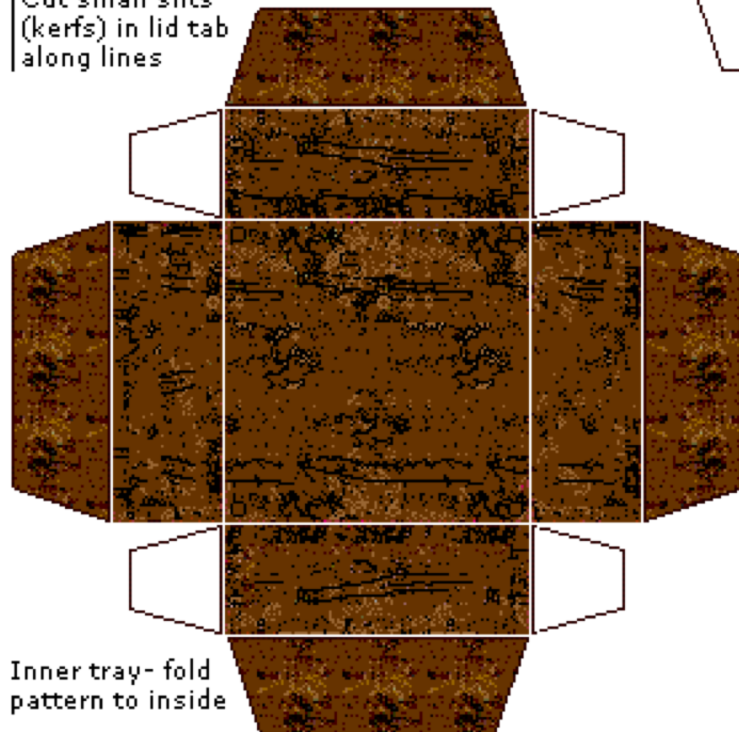


~ Mini Treasure Chest ~
with domed lid



Cut small slits
(kerfs) in lid tab
along lines



Inner tray- fold
pattern to inside

Fold on lines. Crease well.
Shape and glue bottom of
trunk. **Shape and glue lid last**

Cut small slits (kerfs) in
domed lid tabs as indicated.

Carefully shape domed lid
before gluing. Dab glue
lightly on lid kerfs with a
toothpick. Start with front lid
kerfs on both sides then
glue back lid kerfs for best
fit.